



**Bonham Road, Brixton, SW2**

2 bedroom flat to let

**£450 Per Week**

Furnished

## Property Details

Keating Estates are delighted to present this spacious and beautifully appointed two-bedroom flat, ideally located just moments from central Brixton and a short stroll from the green open spaces of Brockwell Park. Set within a charming Victorian residential pocket, this large flat offers generous living space and attractive outlooks both front and back. The property boasts two exceptionally spacious double bedrooms and a sleek, modern bathroom.

The heart of the home is the open-plan living area, featuring a stylish galley kitchen, a dedicated dining space, and a generous lounge area with room for two sofas and a coffee table. The space is bathed in natural light, courtesy of the large sash windows that enhance the bright and airy feel throughout.

Location-wise, it's hard to beat. with a gated entrance to Brockwell Park just 10 minute walk from the property, residents can enjoy the stunning greenery, iconic 1930s Lido, café, and sports facilities all within a few steps. Local favourites such as Maya's Bakehouse, The Hootenanny, Maremma, and Naughty Piglets are just around the corner, along with a large supermarket for everyday convenience.

Brixton Station (Victoria Line and Overground) is just a ten-minute walk away, providing excellent

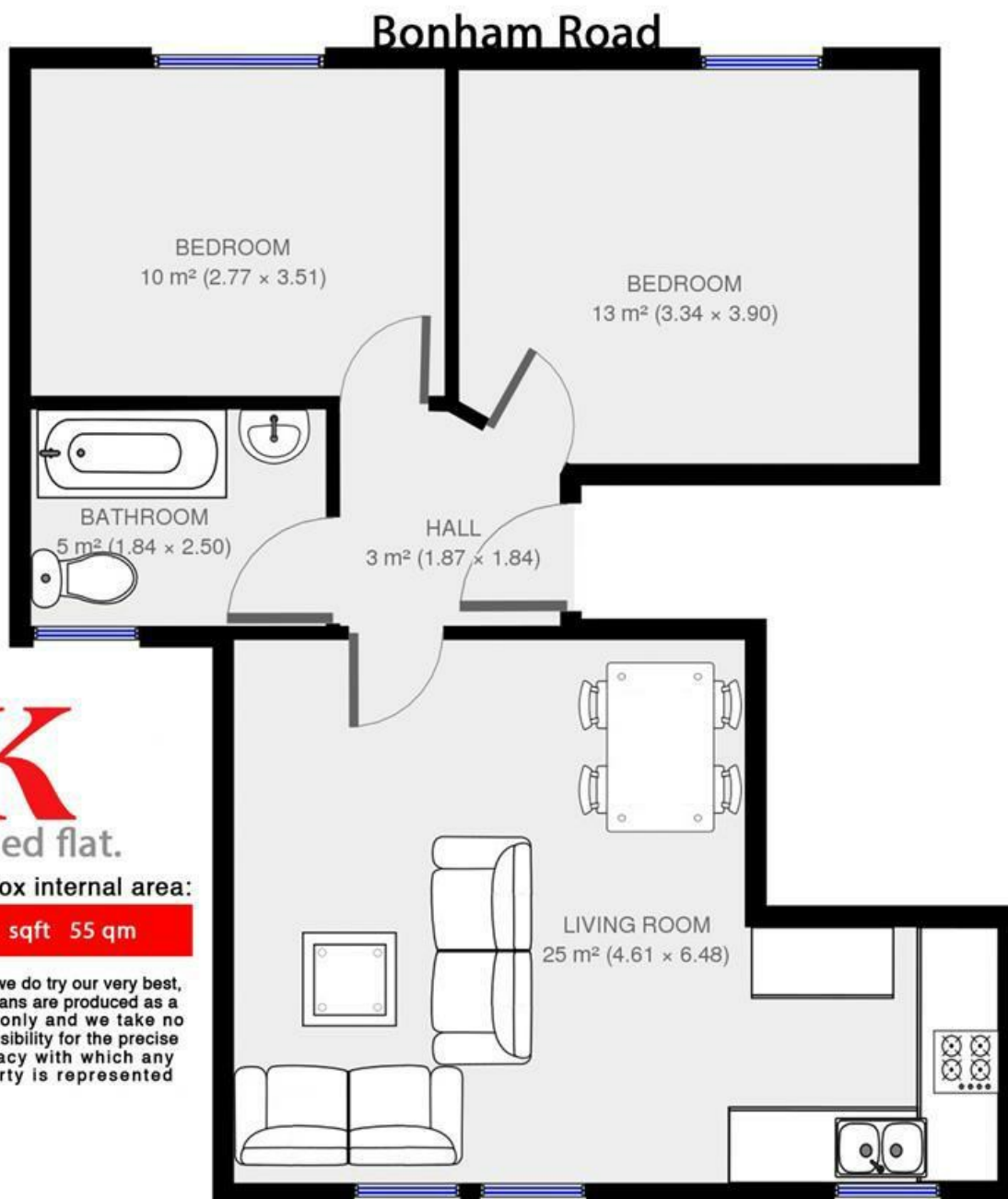
## Features

- Two bed
- Open plan reception
- Bright and airy
- Close to Transport Links
- Short walk from Brockwell Park
- Close to Central Brixton

Council tax band D      EPC rating C (71)



Bonham Road, Brixton, SW2



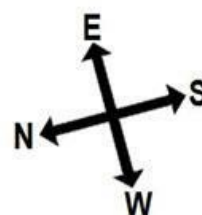
**K**

2 bed flat.

Approx internal area:

**592 sqft 55 qm**

While we do try our very best, floor plans are produced as a guide only and we take no responsibility for the precise accuracy with which any property is represented





Bonham Road, Brixton, SW2

